

# Furniture & Refurbishment Ltd

Tel: 0844 800 0160    [www.furnitureandrefurbishment.co.uk](http://www.furnitureandrefurbishment.co.uk)  
Email: [info@furnitureandrefurbishment.co.uk](mailto:info@furnitureandrefurbishment.co.uk)





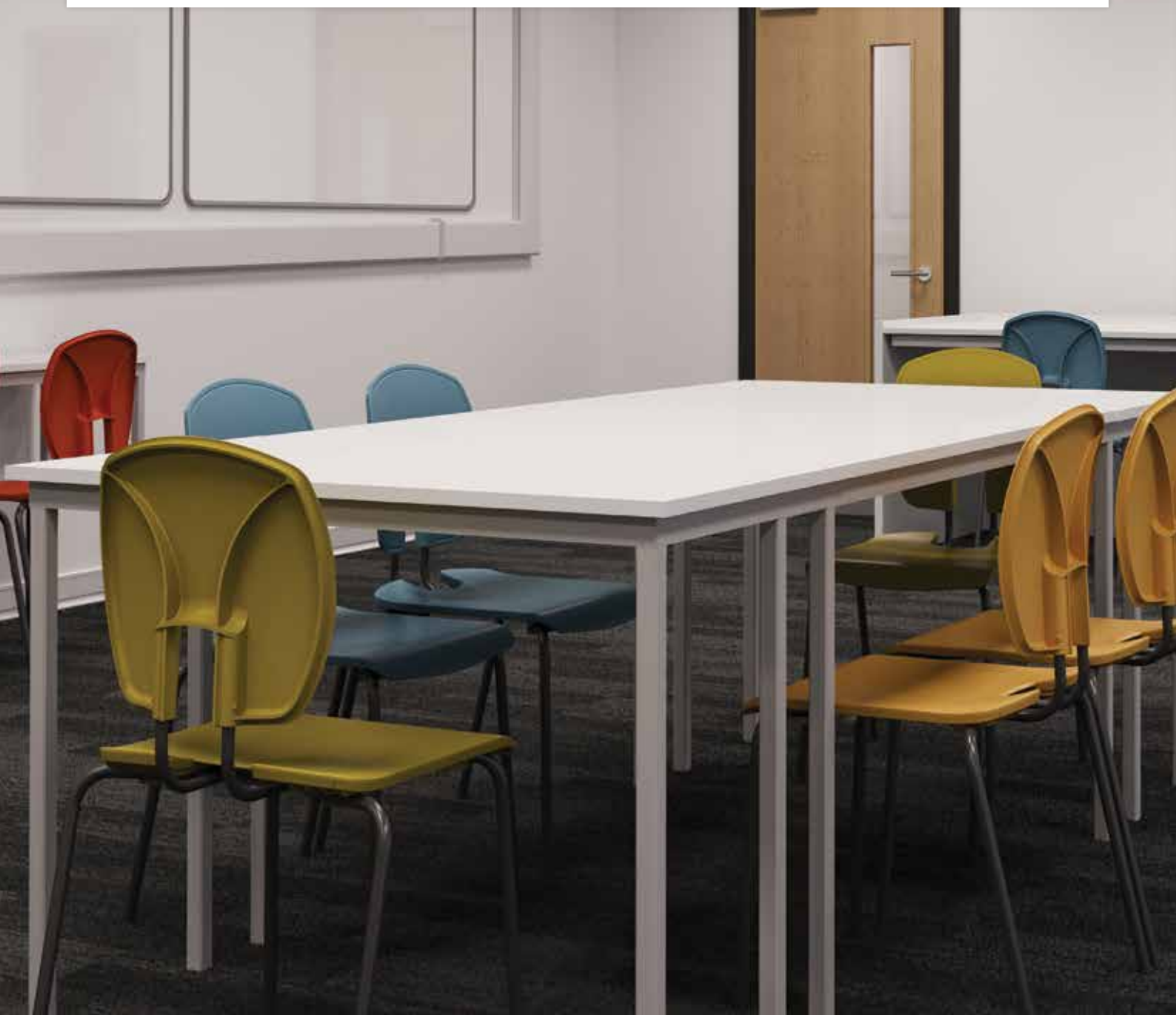






# Contents

Education furniture	6
Re-inspire	30
Classics	36
Café bistro and breakout	38
Public area	50



# ERGOSTAK CHAIRS

The Hille ErgoStak chair is new for 2021. It achieves all the essential maintenance-free durability of an all plastic chair, but it also responds to the demand for a sleeker, better looking chair for new and future classrooms.

In addition to its looks, ErgoStak has been designed to achieve much higher levels of ergonomic postural support than the existing all-plastic chairs on the market. This is a result of over 12 years of research and development (using Actiposture™ systems) and through finely-tuned support of the pelvic/lower spine enables greater levels of student concentration – the only all-plastic chair that properly does this.

We urge you to request a sample chair so that you can feel the difference.



Code	Seat height	Width
ERG5	430mm	482mm
ERG6	460mm	482mm



Colours



Flame



Indian Red



Purple



Blue



Charcoal

[hille.co.uk](http://hille.co.uk)



**DESIGNED BY**

David Rowe in collaboration with Richard Snell









# SE Classic chair

The SE chair is perfect for establishments looking to enhance the overall presentation of their environment whilst providing additional comfort brought about by the chair's focus on lower back support, a feature which is essential during long term use.

The SE range was designed in conjunction with Birmingham City University following a detailed study into the importance of a combination of thoracic, lumbar and pelvic support in the prevention of long term back issues. Studies also found that increased comfort levels helped concentration, therefore aiding learning.



Code	Seat height	Width
SE1	260mm	360mm
SE2	310mm	360mm
SE3	350mm	410mm
SE4	380mm	410mm
SE5	430mm	470mm
SE6	460mm	470mm



Linking



Swivel



Skid base



Two tone



Shell colours



Frame colours



**DESIGNED BY**

David Rowe and Richard Snell

# SE Classic stool

Available in 2 configurations, seat only and seat and back versions. The stool uses the ergonomic seat and back from the SE chair to offer excellent back support and comfort whilst matching in with SE chairs to offer a co-ordinated environment.



Great stacking

Code	Seat height	Width
SESTS1	430mm	515mm
SESTS2	525mm	515mm
SESTS3	610mm	515mm
SESTS4	685mm	515mm



Shell colours



Frame colours



**DESIGNED BY**

David Rowe and Richard Snell







# SE Curve chair

Giving purchasers increased choice in this popular range, the new SE Curve offers a softer, more rounded aesthetic to the classroom or study environment. Building on the ergonomic principles of the Classic, the Curve provides unbeatable postural support. Like the Classic, the Curve is easy to handle and stack, having hand-holds and grips in all the right places. Get on to the new 'Learning Curve'!

The new Curve is available in a new softer range of colours that interact beautifully with each other and the wood-veneered seat option. Single colours or a more adventurous mixing is encouraged, both within an establishment and even in a single chair.



Code	Seat height	Width
SEC5	430mm	470mm
SEC6	460mm	470mm



## Shell colours



## Frame colours



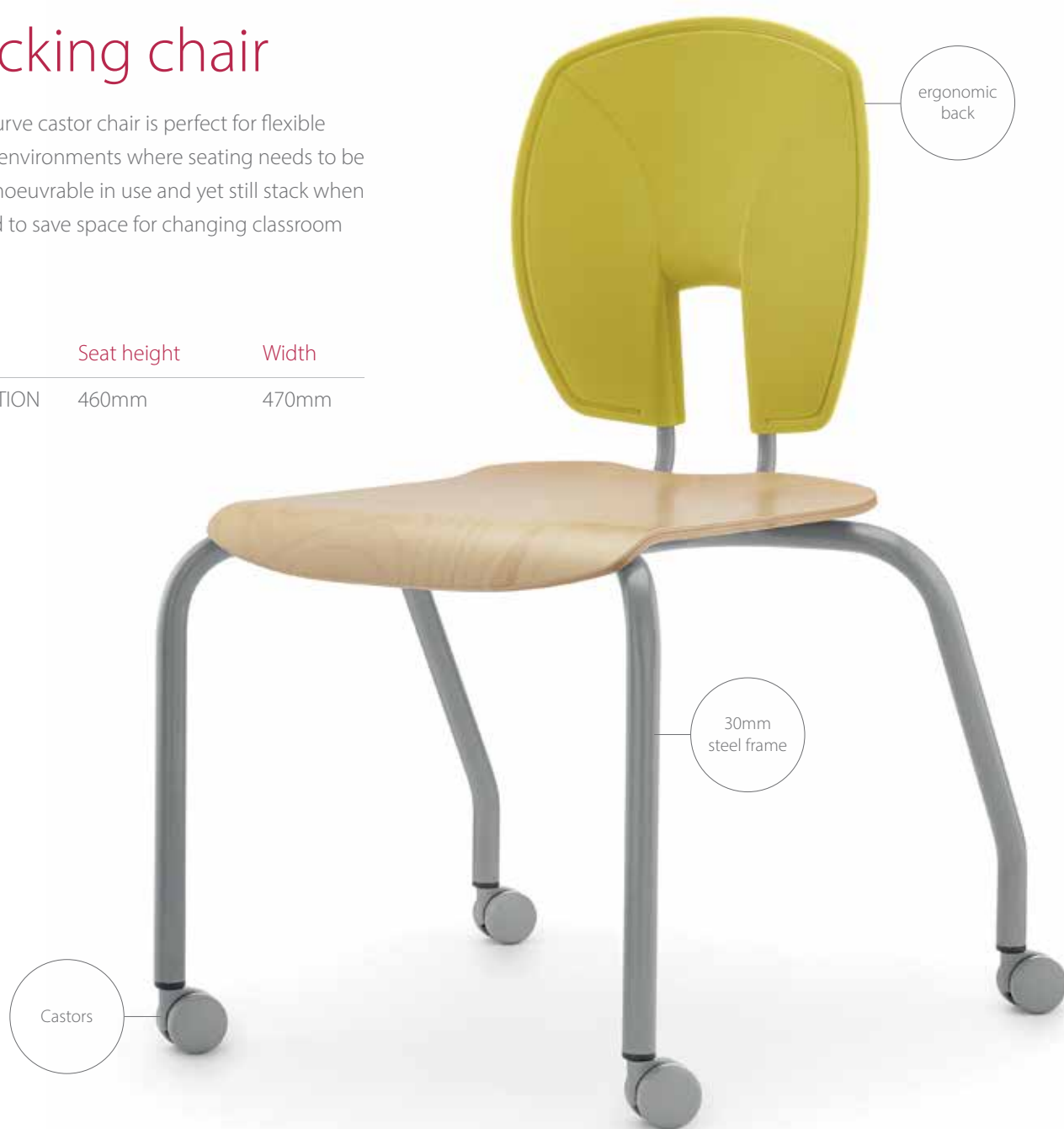
## DESIGNED BY

David Rowe and Richard Snell

# SE Motion Stacking chair

The SE curve castor chair is perfect for flexible learning environments where seating needs to be truly manoeuvrable in use and yet still stack when you need to save space for changing classroom needs.

Code	Seat height	Width
SEC6MOTION	460mm	470mm



Shell colours



Frame colours



**DESIGNED BY**

David Rowe and Richard Snell



# SE Curve stool

The SE Curve stool is the latest addition to the SE stool range. It uses the ergonomic seat and back from the SE Curve chair to offer excellent back support and comfort. Matches in with SE Curve chairs to offer a co-ordinated environment.

Handy hand hole on the backless version at the rear to make moving them around easy. Stable skid base design has no wearable feet. Stacks up to 8 high. Range of 4 heights to suit a wide range of working surface heights.

Code	Seat height	Width
SESTBC1	430mm	515mm
SESTBC2	525mm	515mm
SESTBC3	610mm	515mm
SESTBC4	685mm	515mm



No  
wearable  
feet



# SE Beam system

SE is now available as a tough, multi-seat beam seating unit, with the option of using either the Classic or the Curve backs both offering excellent postural support. For use in breakout areas, foyers and other public spaces where free-standing or floor-fixed seating is required. Under development are armrests and tables that are fixed to the common beam.



Code	Number of Seats	Seat Height	O/A Depth	O/A Width
SEBEAM2SEAT	2	460mm	530mm	958mm
SEBEAM3SEAT	3	460mm	530mm	1508mm
SEBEAM4SEAT	4	460mm	530mm	2058mm



## Classic colours



## Curve colours



## Frame colours



## DESIGNED BY

David Rowe and Richard Snell







Mathematical and scientific diagrams on a blackboard wall:

- Trigonometric identity:  $\sin \frac{A}{2} = \sqrt{\frac{1 - \cos A}{2}}$
- Chemical equation:  $2C_2H_4O_2 + 2ADP + 2P_i \rightarrow 2C_2H_4O_2 + 2ADP + 2P_i$
- Chemical equation:  $C_2H_4O_2 + 2ADP + 2P_i \rightarrow 2C_2H_4O_2 + 2ADP + 2P_i$
- Chemical equation:  $H_2CO_3 \rightarrow H^+ + HCO_3^-$
- Chemical equation:  $H^+ + HCO_3^- \rightarrow H_2CO_3$
- Chemical equation:  $CH_4O \rightarrow 2CH_4O$
- Chemical equation:  $2ADP + 2P_i \rightarrow 2ADP + 2P_i$
- Diagram of a human torso showing internal organs.
- Diagram of a cell with various organelles.
- Diagram of a globe.

# HillePly

Hille worked with multiple design guild mark awarded designer Charlie Fowler to develop a truly ergonomic formed plywood chair that using different frame configurations, can be used for a wide range of applications.

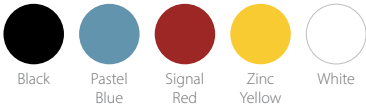
For educational establishments there is an alternative 4 leg option and also an active sitting/tilting skid base. This version gently moves forward with the user to offer continual back support.



Plywood shell



Base colours



Product	Seat height	Width	Depth	Overall Height
4 leg	460mm	510mm	510mm	785mm
Tilting skid	460mm	505mm	535mm	780mm



DESIGNED BY  
Charlie Fowler



# Series E chair

The classic polypropylene classroom chair originally designed by Robin Day for Hille offers a durable and cost effective seating solution in the most testing environments. Frames are constructed of high quality steel and are painted with leatherite paint for the ultimate durability. Only the highest grade of polypropylene is used in the manufacturing of these shells and a range of colours are available in both standard and flame retardant versions.

## 4 leg

Code	Seat height	Width
EA	260mm	350mm
EB	310mm	360mm
EC	350mm	400mm
ED	380mm	470mm
EE	430mm	470mm
EF	460mm	470mm

## Skid base

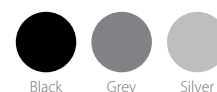
Code	Seat height	Width
EBS	310mm	440mm
ECS	350mm	460mm
EDS	380mm	535mm
EES	430mm	535mm
EFS	460mm	535mm



Shell colours



Frame colours







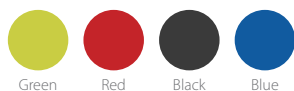


Coloured MDF seat colours



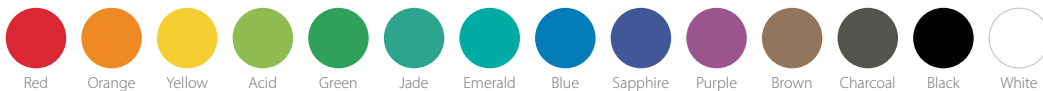
Red Yellow Green Blue

Round Top shell colours



Green Red Black Blue

Series E and Polypropylene shell colours



Red Orange Yellow Acid Green Jade Emerald Blue Sapphire Purple Brown Charcoal Black White

Frame colours



Black Dark Grey Light Grey Ivory

## Series E

Code	Seat height	Width
SFW1	575mm	470mm
SFW2	610mm	470mm
SFW3	685mm	470mm

## Polypropylene Flat Top

Code	Seat height	Width
SF1	430mm	410mm
SF2	525mm	410mm
SF3	610mm	410mm
SF4	685mm	410mm

## Beech & MDF

Code	Seat height	Width
SFW1	430mm	410mm
SFW2	525mm	410mm
SFW3	610mm	410mm
SFW4	685mm	410mm

## Round Top stools

Code	Seat height	Width
RTS1	430mm	410mm
RTS2	525mm	410mm
RTS3	610mm	410mm
RTS4	685mm	410mm



# Series E stools

The stool version of the original Series E chair allows furniture to be matched across the school environment and also offers a comfortable yet durable alternative to traditional stools. The addition of a strengthening bar between the front and back legs offers even more stability and the frames feature high quality steel with a leatherite paint finish for the ultimate durability.



## Polypropylene Flat Top stool

The classic Flat Top stool has a simple stacking design and is extremely durable giving many years of service in the most testing environments. Frames feature high quality steel and leatherite paint finish for the ultimate durability and shells can be standard or flame retardant in blue, making them suitable for usage in all environments including labs.



## Beech & MDF Flat Top stool

Developed from the original polypropylene version these wooden top stools offer an attractive and durable alternative. Frames feature high quality steel and leatherite paint finish for the ultimate durability. Tops are fitted with metal inserts to ensure long life and are available in beech veneer, red, blue, green, yellow and clear lacquer and also incorporate a hand hole for easy carrying.



## Round Top stools

The Hille Round Top stool is tough and durable whilst also being very cost efficient. Available in a range of 4 heights to suit various working surface heights and a range of colours to suit your room.



**DESIGNED BY**  
Robin Day - Series E





0 Zero	1 One	2 Two
4 Four	5 Five	6 Six
	9 Nine	10 Ten



# Affinity chair

The Affinity chair range is perfect for schools looking for a durable attractive product at an affordable price. The Affinity chair features a high quality steel frame and a high grade polypropylene shell and has been tested to EN1729 part 2.

The Affinity chair is available in six European heights with a range of frames and shell colours.

Code	Seat height	Width
AF1	260mm	425mm
AF2	310mm	425mm
AF3	350mm	425mm
AF4	380mm	518mm
AF5	430mm	518mm
AF6	460mm	518mm



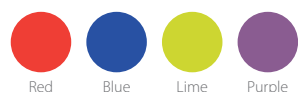
Range of 6 heights



Seat and back pad

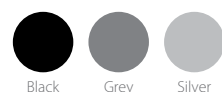


Shell colours



Red Blue Lime Purple

Frame colours



Black Grey Silver



Excellent stacker



Linking

# Tables

Hille tables are a durable and attractive option for today's classrooms. The frames are constructed of high quality steel and finished in a leatherite powdercoat for long lasting good looks. Tops are fixed with no less than 8 recessed fixings which enables us to offer a 10 year warranty on all of our table products.

Available in a range of 6 British Standards heights and a range of frame colours to match in with our chair ranges.



Code	Height
TB1	460mm
TB2	530mm
TB3	590mm
TB4	640mm
TB5	710mm
TB6	760mm

## Top colours



Red Blue Beech Grey

## Frame colours



Black Dark Grey Light Grey Ivory



Exam desk



Coffee table



# Anti-bacterial Affinity chair

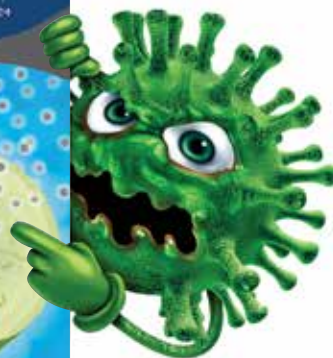
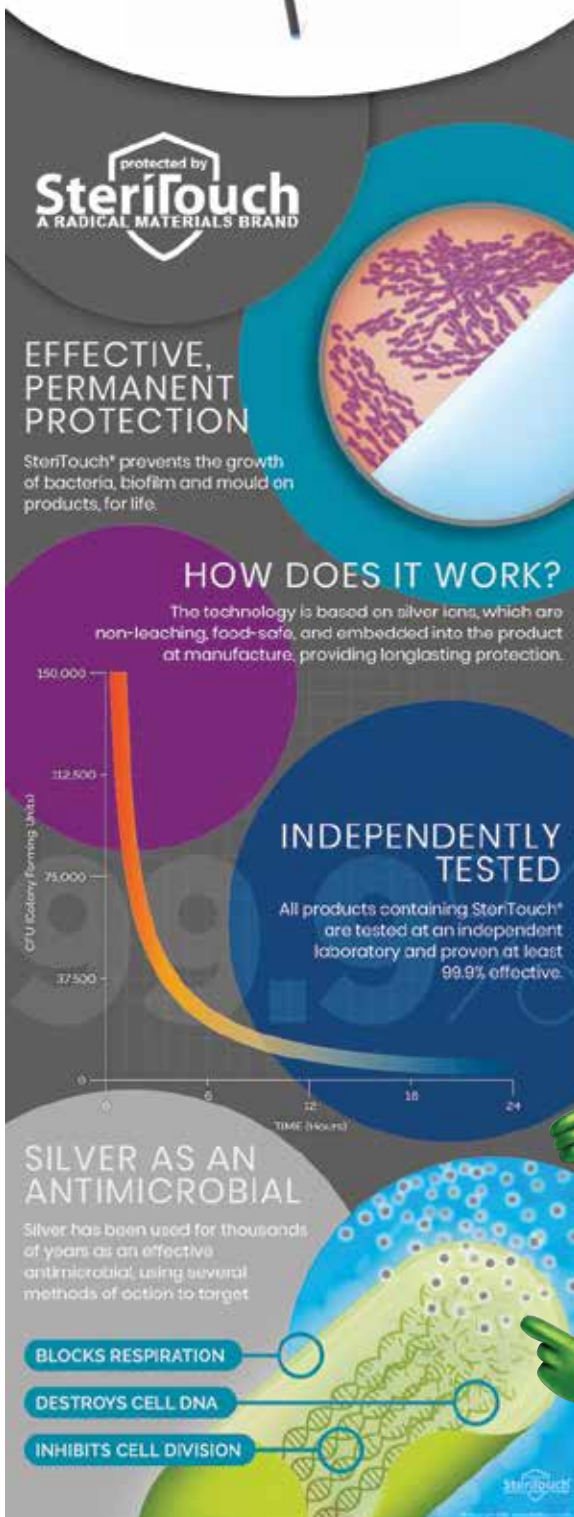
Hille Affinity Anti-Bacterial chairs are available in a range of 6 heights for use across all ages of Education. Hille has partnered with Steritouch to provide a product which, by harnessing the properties of Silver, restricts the growth of microorganisms, including those responsible for illness and infection such as MRSA, E-Coli and many others.

But what does it really mean in real terms for Educational Establishments? With bacteria not being allowed to propagate on the chairs surface over time, a chair left at 3pm one day, will be free of bacteria by 9am next morning, ready for the new school day.

The other advantage of the anti-bacterial compound being inherent within the shell is that every inch of the shell is protected, so no missed hard to reach areas as may happen with an anti-bacterial wipe or traditional cleaning. And of course, the anti-bacterial compound is at work 24 hours a day.

Anti-bacterial products have become commonplace in hospital situations and high use public areas, but its time now to help to protect our Teachers and Students too.

Hille has sought to keep the cost of this technology down to a minimum, so as to make its availability as affordable as possible.



Code	Seat height	Width
AB1	260mm	425mm
AB2	310mm	425mm
AB3	350mm	425mm
AB4	380mm	518mm
AB5	430mm	518mm
AB6	460mm	518mm

Shell colours



Blue

Frame colours



Black



Grey

# Pepperpot chair & stool

The Hille Pepperpot range offers a different exciting new look, lifting any environment with its bold lines and strong colour range. Why blend in when you can stand out? In addition to its looks the Pepperpot range offers greatly increased comfort over more traditional chairs and stools, which in turn increases concentration levels and productivity.

## Pepperpot chair

Code	Seat height	Width
PEPC5	430mm	490mm
PEPC6	460mm	490mm

## Pepperpot stool

Code	Seat height	Width
SPP1	430mm	534mm
SPP2	525mm	534mm
SPP3	610mm	534mm
SPP4	685mm	534mm
SPP5	760mm	534mm

Durable polypropylene shell

High grade steel frame

Exciting colour ranges

Swivel

Frame can run on feet or runners



Shell colours



Red Orange Green Blue Pink Purple Grey Black

Frame colours



Black Dark Grey Light Grey Ivory





# Reinspire

Reinspire is the sub brand of Hille created following the purchase of the manufacturing rights for the GH and MX ranges from Remploy Furniture, allowing establishments to continue to purchase Remploy chairs in order to match in with existing furniture as well as offering a cost effective quality option to new customers.



## GH20 chair

The GH20 chair was Remploy's main education polypropylene chair range and is available in 6 different heights to suit all age ranges.

As well as being very comfortable and durable the GH range is very well proportioned. At just 450mm as a total width on the larger sizes it is perfect for any environment where space is at a premium and it manages this without sacrificing comfort for the user. In a classroom this means that 2 adult height GH20 chairs will easily fit under an 1100mm desk and in an assembly hall the width saving of around 20mm over standard offerings really makes a difference as to possible sitting numbers when multiplied over hundreds of chairs.



Code	Seat height	Width
GH201	260mm	365mm
GH202	310mm	365mm
GH203	350mm	365mm
GH204	380mm	401mm
GH205	430mm	450mm
GH206	460mm	450mm



Skid base



Swivel



Writing tablet



Seat and back pad



### Shell colours



### Frame colours



# MX24 & MX stools

The MX24 chair is the original 2 piece polypropylene chair offering a durable and attractive option to a whole range of environments whether it be schools, church halls and hospitals amongst many others. This sturdy chair range stacks and is available in a range of colours and even has a matching range of stools in the MX05 and MX08 for perfect co-ordination.

The fully welded A frame design is constructed in 22mm high tensile steel on the main frame as opposed to the 19mm normally found on this type of product. This ensures the ultimate durability especially when coupled with the chair's strengthened seat and back supports.

## MX24

Code	Seat height	Width
MX241	260mm	403mm
MX242	310mm	403mm
MX243	350mm	403mm
MX244	380mm	403mm
MX245	430mm	403mm
MX246	460mm	403mm

## MX stools

Code	Seat height	Width
MX08J	560mm	415mm
MX08L	610mm	415mm
MX08N	660mm	415mm



Shell colours



Blue



Grey



Black



Brown



Red



New green



Standard green

Frame colours



Flint



Silver







## MX70 chair

The MX70 classic chair was Remploi's original polypropylene chair and remains unique in the UK as it's the only one piece polypropylene chair to have the steel frame running up the back of the shell. It is fair to say that this could be viewed as being over-engineered but the end result is simply the strongest, most resilient polypropylene chair on the market, a feature which has seen it favoured in the most demanding, severe contract use environments over the years and must be a consideration in any situation where a chair has got to last no matter what it encounters.

### MX70

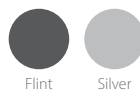
Code	Seat height	Width
MX705	430mm	463mm
MX706	460mm	463mm



#### Shell colours



#### Frame colours





# Hille Classics

## Polyside

Over the years Hille had the good fortune to work with many designers including Michael Dye, Fred Scott and Peter Murdoch to name but a few. But it was Robin Day's designs that really defined the success of Hille in the 1950's, 1960's, and 1970's.

Firstly in the 1950's with the Hille Stak wooden chair and then in 1963 saw the launch of the groundbreaking Polyside, as Day and Hille recognised the desire for a more durable and affordable alternative to the wooden chairs that had dominated before it.

Instantly recognisable by its elegant frame, its form and poise sets it apart from any chair design that subsequently followed.



Top colours



Flame



Blue



Light  
Grey



Charcoal

Frame colours



Matt  
Black



Chrome

Width

530mm

Height

745mm

Depth

505mm

Seat Height

440mm

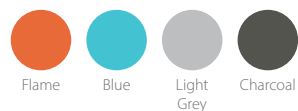


# Armchair

The Polyside chair had been such a runaway success that it enable Hille to further invest in the tooling for a new design, and the Armchair was launched in 1967. The clever integration of arms and rolled edge had the benefit of adding even greater strength as well as comfort and the Armchair remains as one of the most comfortable Polypropylene chairs ever made.



Top colours



Frame colours



Width	Height	Depth	Seat Height
600mm	770mm	535mm	440mm



DESIGNED BY  
Robin Day

# Café, Bistro and Breakout

Hille has a wide range of both loose and fixed furniture for café, bistro and breakout situations.





# Apero Fast Food

Our Apero Fast Food unit uses the incredibly comfortable ergonomic shell from the Pepperpot chairs to create a more welcoming fixed seating unit.

Available in 2 seater, 4 seater single access and 4 seater double access, the Apero Fast Food unit allows you to create a suitable layout for any situation.

Units can be floor fixed or freestanding, with a good range of colour options.

## Apero Fast Food units - backless

Code	Seat height	Width	Depth	Overall Height
4S/2W	430mm	1100mm	1145mm	720mm

## Apero Fast Food units - seat and back

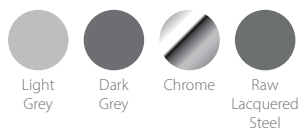
Code	Seat height	Width	Depth	Overall Height
4S/2W	430mm	1100mm	1145mm	760mm



### Shell colours



### Frame colours



**DESIGNED**

in conjunction with Richard Snell

# Apero 4 leg & cantilever

Hille worked with designer Richard Snell to create a range of freestanding frame options that would compliment the ergonomic Pepperpot chair shell, making the perfect comfortable, attractive, affordable option for cafés, bistros and breakout areas.

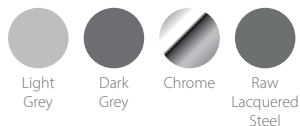
Code	Seat height	Width	Depth	Overall Height
4 leg	450mm	450mm	475mm	765mm
Canti	450mm	490mm	420mm	780mm



## Shell colours



## Frame colours









# Apero skidbase and skidbase with arms

A good skidbase frame brings a certain aesthetic as well as practical benefits in use. The Apero skid frame stacks well and has the additional option of integrated arm rests too.

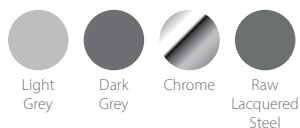
Code	Seat height	Width	Depth	Overall Height
Skid	450mm	535mm	450mm	765mm
Skid/A	450mm	535mm	450mm	765mm



Shell colours



Frame colours



**DESIGNED**

in conjunction with Richard Snell



# Plus & Minus stool

The Plus & Minus bar stool range is a result of a chance meeting with award winning designer Alexander Hay at a London design show. The range had been proto-typed and immediately grabbed our attention and we felt we had to bring it to the market.

The combination of beautiful crafted solid red oak tops, carrying the plus or minus detail and the creative simplicity of the frame make a striking option as a bar or breakfast stool.



Code	Seat height	Width	Depth	Overall Height
1	450mm	452mm	452mm	450mm
2	650mm	520mm	520mm	650mm
3	780mm	562mm	562mm	780mm



Frame colours



Jet Black



Signal Red



Signal Blue



Olive Green



Papyrus White



**DESIGNED BY**  
Alexander Hay





# SE Plywood chair

This version takes the incredibly comfortable backs of the SE Classic and Curve chairs and adds a beautifully crafted plywood seat section. The result is an incredibly comfortable, durable and affordable option for café, bistro, breakout and office areas, with a great range of colours and wood finishes.

Code	Seat height	Width
SEC5	430mm	470mm
SEC6	460mm	470mm



## Back colour options



## Plywood seat options

Beech Oak Cherry

## Frame colours



## DESIGNED BY

David Rowe and Richard Snell







## Public area seating

Hille's public area furniture is used in a wide range of scenarios in the UK and in fact around the world. It carries out its duties often unnoticed, as the approved bench seating for London Underground and Overground Stations, benching for Chiltern Railway, Liverpool Underground, London Piers and Rivers, amongst many others.

Its incredible durability and ease of maintenance means that it looks good no matter how long it has been in service.



# Toro & Centro

Designed by Robin Day for Hille the individual seat places are mounted on a tough steel base, making it suitable for both indoor and outdoor installations.

Manufactured for severe contract use with safety, strength and comfort in mind, every part can be replaced or serviced ensuring the longevity of these units, which reduces their environmental impact and cost versus buying new every few years.

Options include:

- Units of 2 - 5 seat places
- Backless bench versions available
- Can be supplied with or without arms
- 2 units can be supplied as 1 back to back
- Extensive range of frame colours including bespoke finishes

As part of the design the units can either be freestanding or floor fixed.

In response to the need to have bench seating in areas where space is at a premium, such as the London Underground Network, Centro was developed to be wall mounted and more compact in dimensions.



**DESIGNED BY**  
Robin Day

# Woodro

Designed by Robin Day for Hille the individual seat places are mounted on a tough steel base, making it suitable for both indoor and outdoor installations.

Manufactured for severe contract use with safety, strength and comfort in mind, every part can be replaced or serviced ensuring the longevity of these units, which reduces their environmental impact and cost versus buying new every few years.

Options include:

- Units of 2 - 5 seat places
- Backless bench versions available
- Can be supplied with or without arms
- 2 units can be supplied as 1 back to back
- Extensive range of frame colours including bespoke finishes



# Perch

Developed in conjunction with Transport for London, the Hille Perch unit can be supplied as a wall mounted unit or floor fixed. Intended to offer a compact space efficient place to rest, such as shelters on next to lifts.

The high grade metal frames can be filled with metal seat pan units or hardwood slats.





# Furniture & Refurbishment Ltd

Tel: 0844 800 0160    [www.furnitureandrefurbishment.co.uk](http://www.furnitureandrefurbishment.co.uk)  
Email: [info@furnitureandrefurbishment.co.uk](mailto:info@furnitureandrefurbishment.co.uk)

